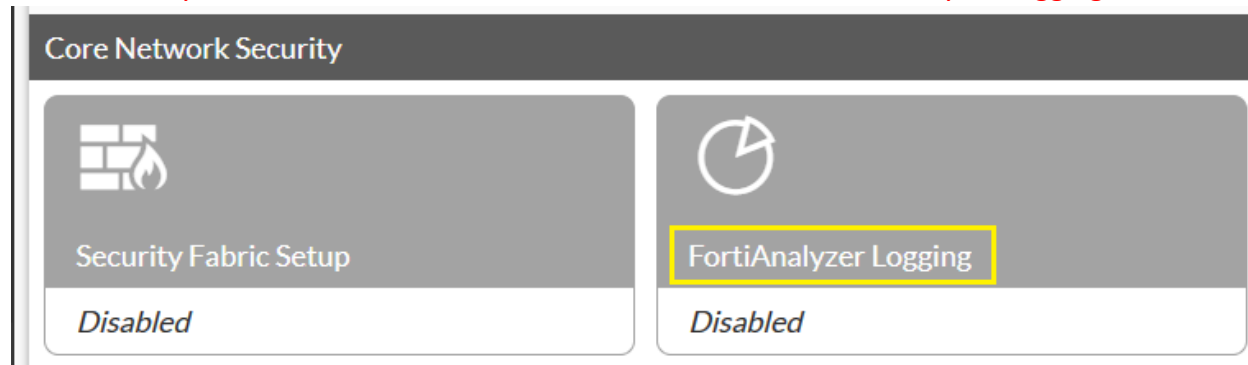


## Deploying Root FortiGate Security Fabric:

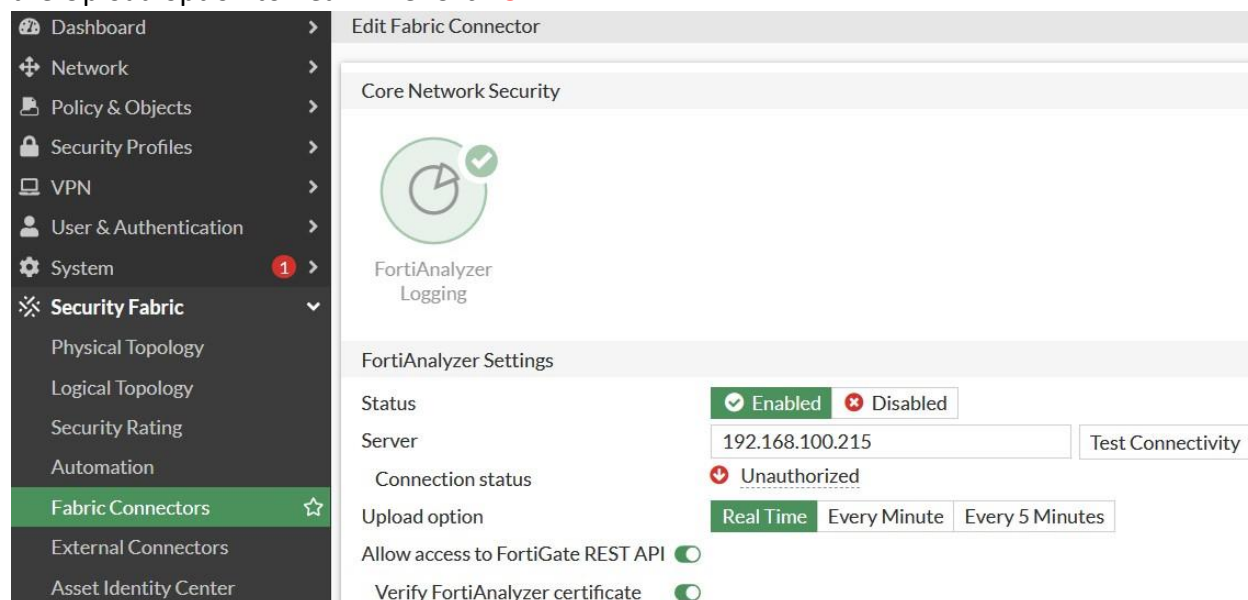
Deploying Security Fabric with three downstream FortiGates connecting to one root FortiGate. To deploy a Security Fabric, you need a FortiAnalyzer running firmware version 6.2 or later.

### Configure FortiAnalyzer Logging:

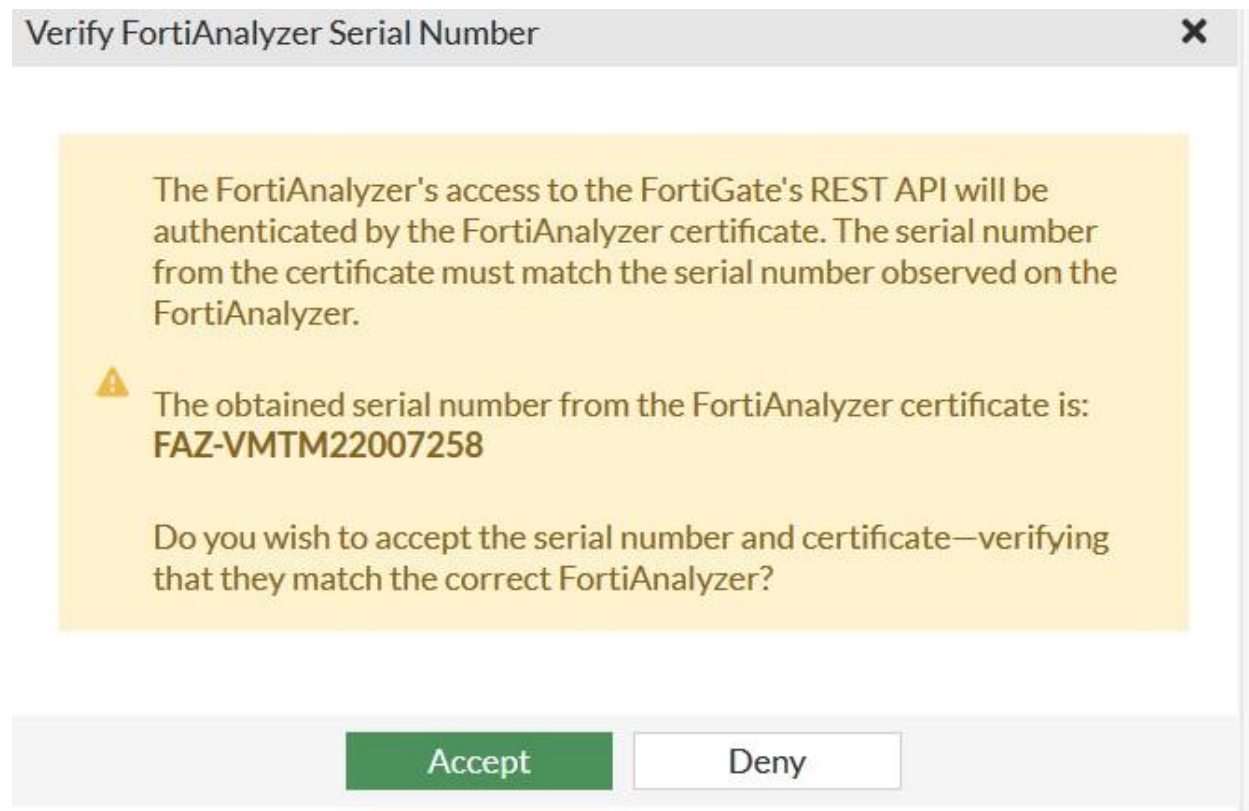
Go to **Security Fabric > Fabric Connectors** and double-click the **FortiAnalyzer Logging** card.



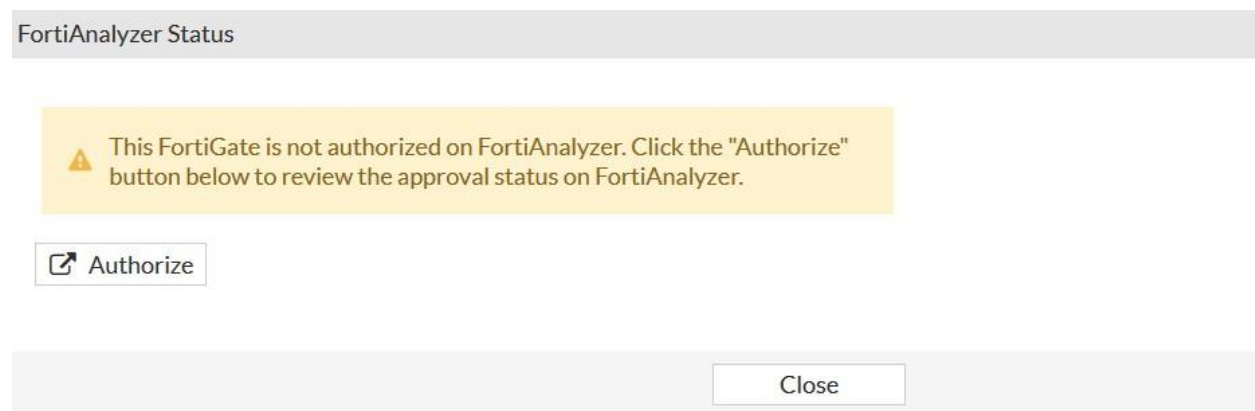
Set the Status to **Enabled**. Enter the FortiAnalyzer IP in the Server field (**192.168.100.215**). Set the Upload option to Real Time. Click **OK**.



A warning message indicates that the FortiGate is not authorized on the FortiAnalyzer. The authorization is configured in a later step on the FortiAnalyzer. Click **Accept**. The FortiAnalyzer serial number is verified.

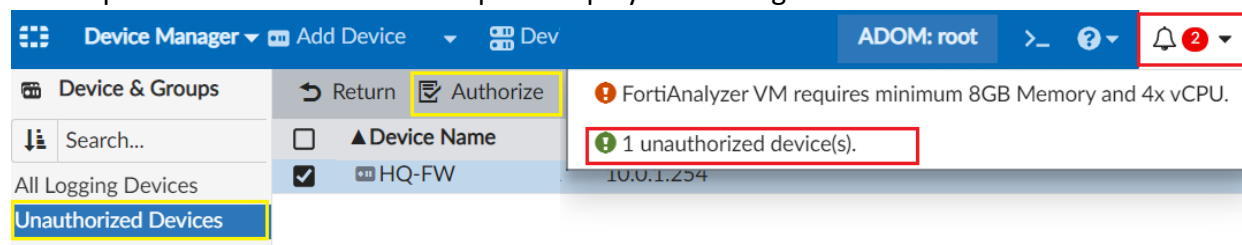


It will ask to Authorize click **Close**.

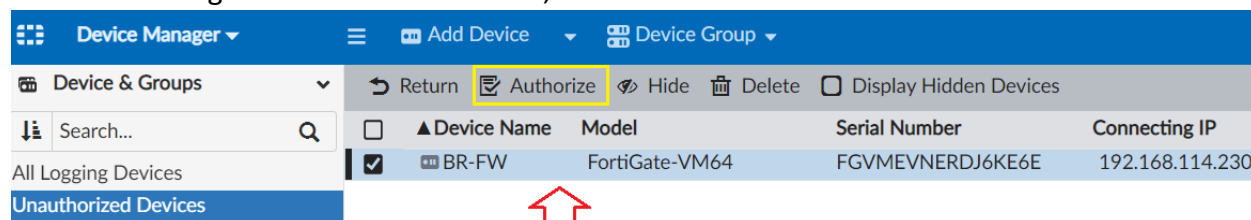


## FortiAnalyzer Authorization:

Login to FortiAnalyzer in the root ADOM, go to **Device Manager** and click **Unregistered Devices** in the quick status bar. The content pane displays the unregistered devices.



Select the unregistered device or devices, then click **Authorize**.



Select the ADOM in the **Add the following device(s) to ADOM** list. Click **OK** to register the device or devices. The device or devices are added and FortiAnalyzer can start receiving logs from the device or devices.

### Authorize Device

Add the following device(s) to ADOM: FG-7-0-9 (FortiGate 7.2)

Device Name	Assign New Device Name
HQ-FW	<input type="text" value="HQ-FW"/>

OK Cancel

The device is successfully authorized click **Closed**.

### Authorize Device



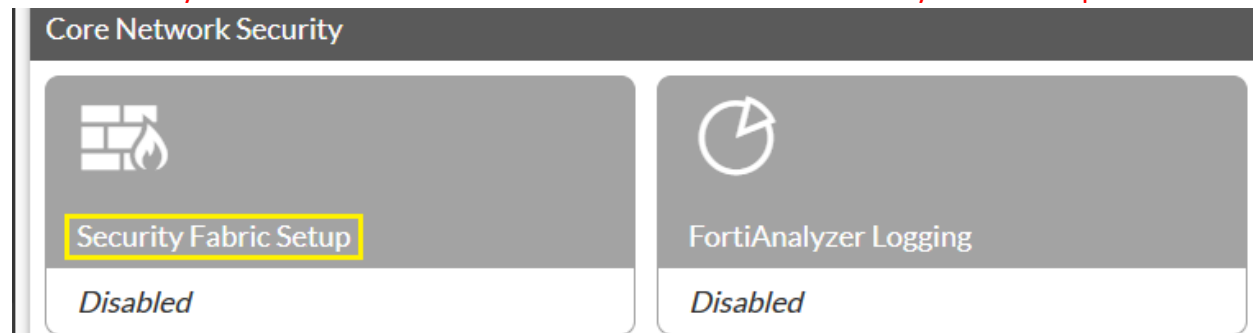
Double click or select Edit type the Admin User and Password in this case **admin/123**

Admin User

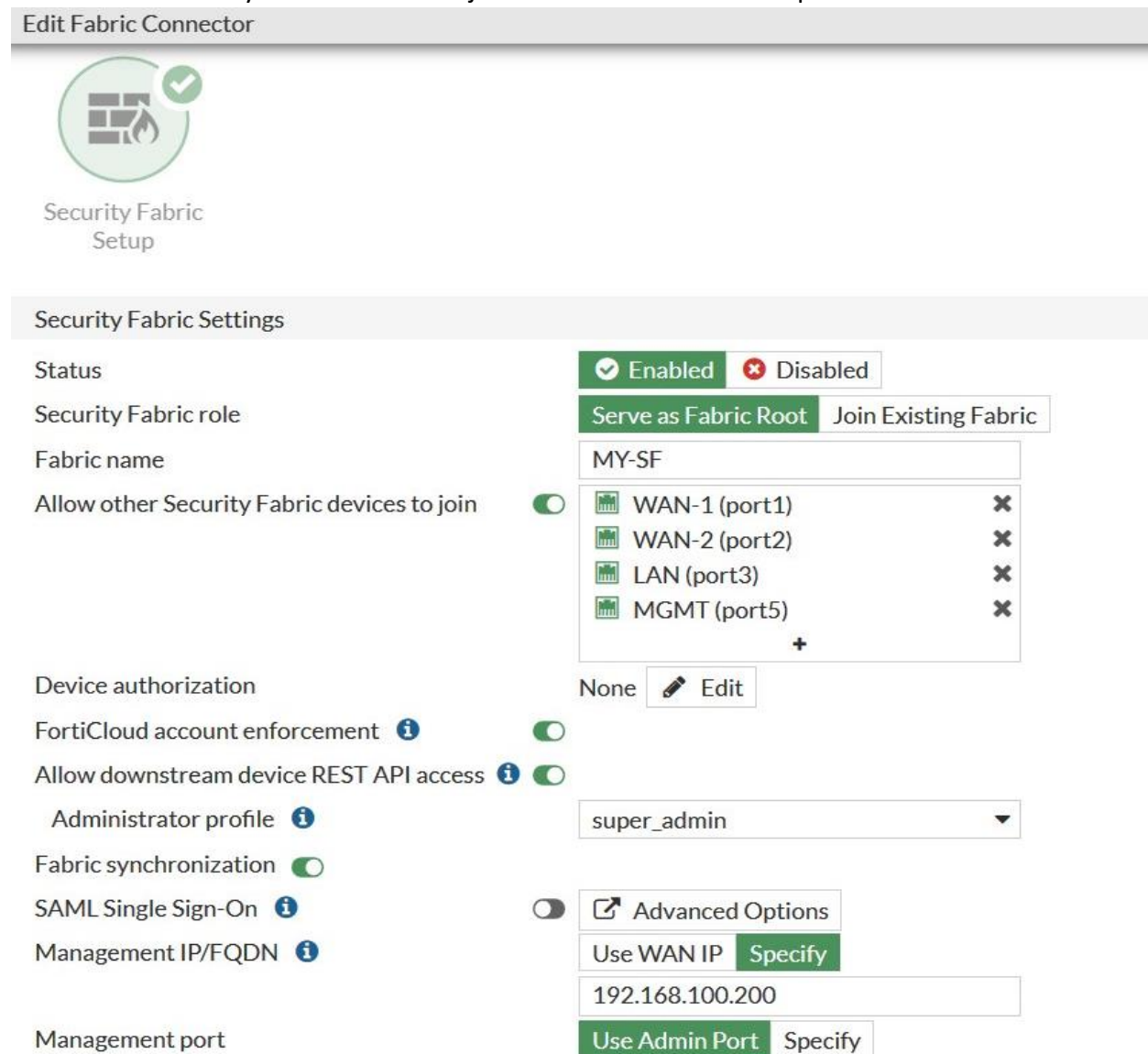
Password

## Security Fabric Configuration:

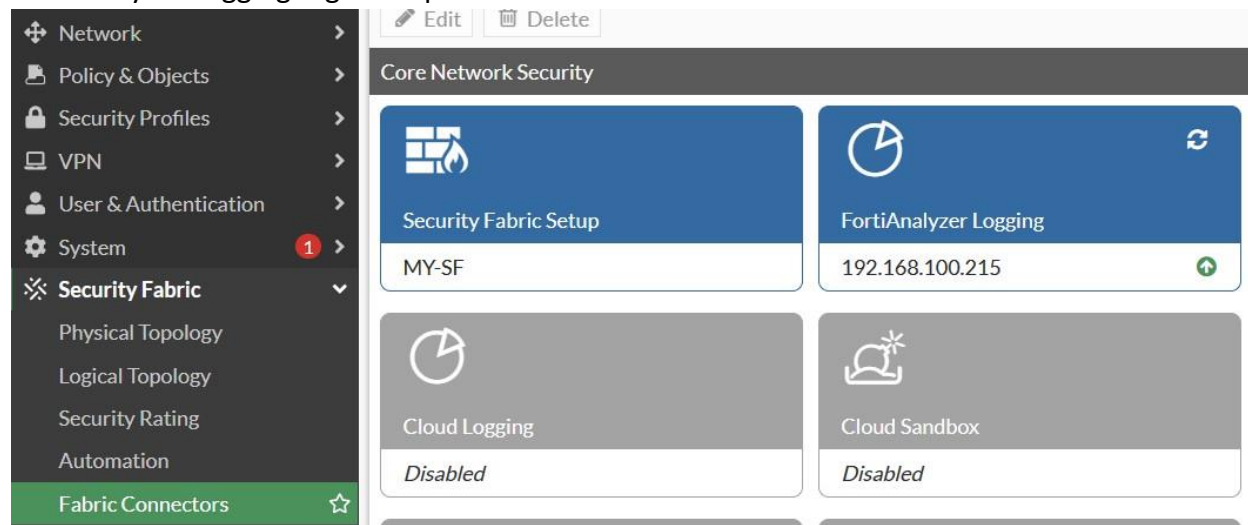
Go to **Security Fabric > Fabric Connectors** and double-click the **Security Fabric Setup** card.



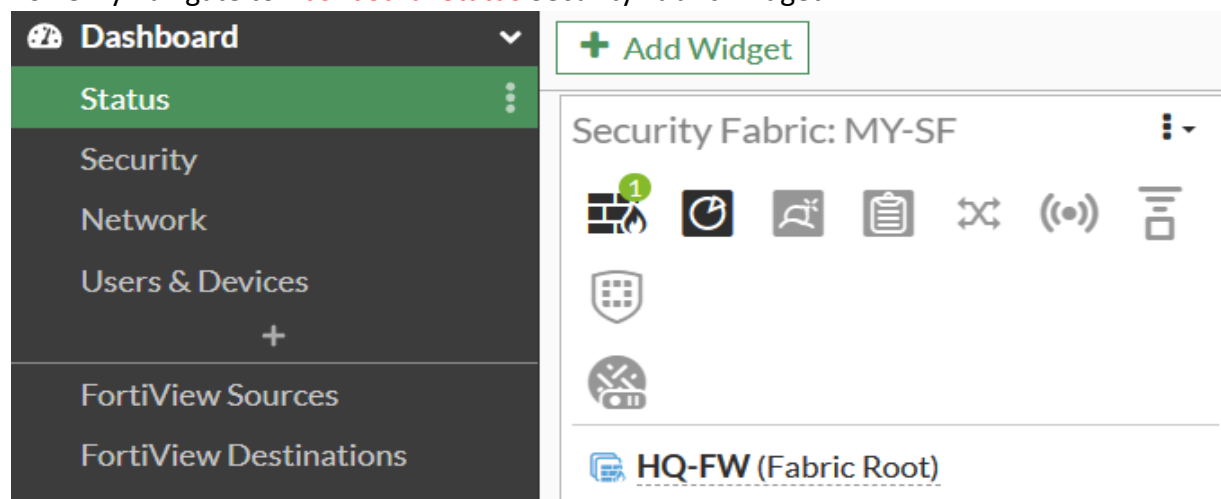
Set the Security Fabric role to **Serve as Fabric Root**. Enter a Fabric name, such as MY-SF. Ensure **Allow Other Security Fabric devices to join** is enabled and add the ports. Click **OK**.



Finally, FortiAnalyzer Logging and Security Fabric Setup has been completed. Make sure FortiAnalyzer Logging is green up arrow.



To verify navigate to **Dashboard>Status** Security Fabric Widget.



Also, can verify from **System>Fabric Management**

